

# The Semi-micro | Micro IP68

OEM weigh cells

WZB25-NC



WZB...	25-NC
Capacity	20 g
Readability	0,01 mg

The WZB25-NC has a capacity of 20 g with a readability of 10 µg combined with a small housing. A multiple weighing system can be arranged in linear fashion with a distance of 25 mm between the weighing pins. Head-to-Head configuration allow 12.5 mm track distance.

Highlighted performance features:

- The load cells consist of two parts:  
The electromagnetic force compensation weighing system in stainless steel IP44 housing and an electronics module.
- Adjustable load receptor with overload protection and lift-off protection
- Electronics module with a front plate for all connections
- All connections are bolt connections
- LEDs for power and data transfer
- Fast warm-up time as the electronics is separated from the weighing technology
- Easy to adapt to existing installation options
- RS232 / USB-C interface for configuration and data transfer
- Additional power supply via the RS232 interface
- Configuration software for handling weight data the menu settings and adjustment
- Internal calibration weight by external control for easy checks in automated environments
- IP68 during wash down | IP 44 during weighing

- With IP68 this weigh cell is well suited for pharmaceutical applications with requirements for Clean-in-place (CIP) and Sterilize-in-Place (SIP).
- Several units can be combined by parallelization of multiple weigh cells – each every 25 mm.
- Customer housing of multiple weigh cells can be fitted easily over the weigh cells.
- Sealing rings on top can be dismantled and refitted after placement of customer housing.
- Display unit with operator keypad (optional)



Electronic Module



YRD01 Display with control panel (optional)

#### Technical Data

Model	WZB25-NC
Capacity	20 g
Readability	10 µg
Required preload on pan support 1)	5 g
Repeatability (standard deviation) 2)	≤± 20 µg
Linearity	≤± 50 µg
Response time 2)3)	0.8 s / ±10 µg 400 ms / ± 100 µg 250 ms / ± 1 mg
Operating temperature range	+10 .... +30 °C
Allowable temperature range	+5 .... +40 °C
Weigh cell dimension	24 × 180 × 87 mm (base × height)
Electronic PCB dimension	105 × 130 × 55 mm (base × height)
Cable length weigh cell to electronics	3 m
Pin for weighing pan   load receptor	3 mm Ø / 20 mm above housing, integrated overload and lift off protection
Power supply	YEPS01-15V0H   100 – 240 VAC, 50 – 60 Hz   15V DC
Alternative Power supply	12 ... 26, optimal 15 V (+15 % -10 %); 0,5 VPP (Peak to Peak)
Power consumption	2 W (typical)
Interface	RS232/USB-C 7-/8-bit; -even, -mark, -odd, -space; transmission speed 600 – 115200 Baud, 1 or 2 Stop bits, Software Hardware handshake ; Power supply also possible via RS232 connection / Pin 1 / VDC IN 12 – 26V

#### Materials

Housing	Stainless steel 1.4404 / AISI316L
Weighing pin	Titanium
Electronic Box	Transparently passivated aluminum
IP rating related to DIN EN60529	IP44   IP68 <sup>4)</sup>

#### Options | Accessories

Windows configuration software for test and adjustment	Sartorius CAS Suite
Display unit with operator keypad	YRD01
Connection cable	<b>YCC-D09M-USB-A</b> Data cable (USB-A) > WZB... (RS232 / 9-pin / male) / 1,5m <b>YCC-USB-C-A</b> Data cable USB-C > USB-A / 1.5 m <b>YCC-D09MF</b> Data cable RS232 / 9 pin./ male / 9 pin. / female / 1,5m

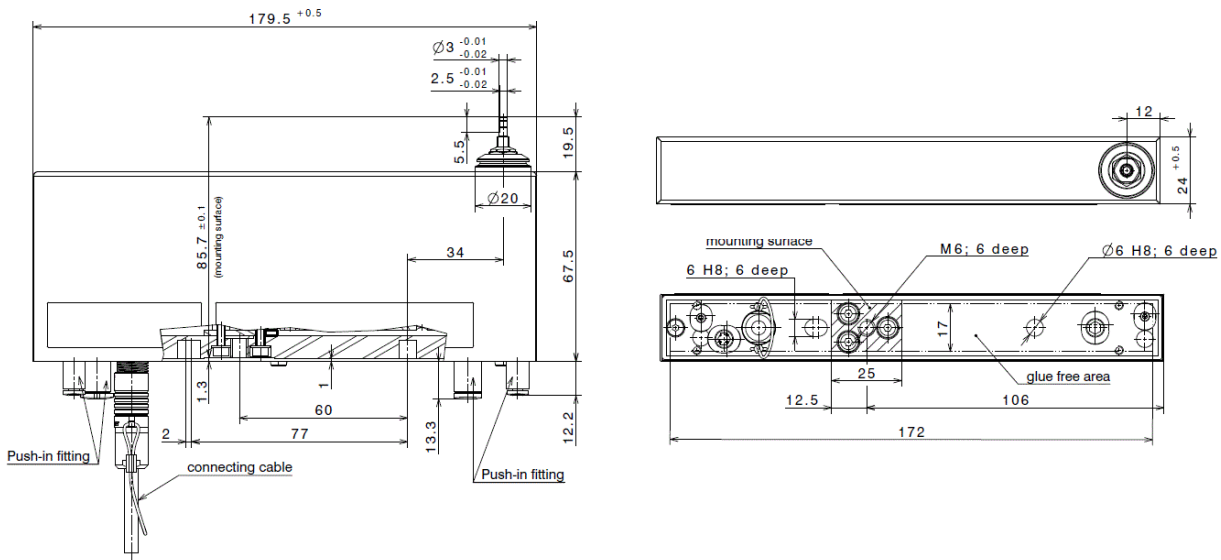
1) the preload can be configured by using the Sartorius CAS Suite software, greater preloads are possible, but reduce the weighing capacity.

2) depending on measurement equipment set-up and conditions

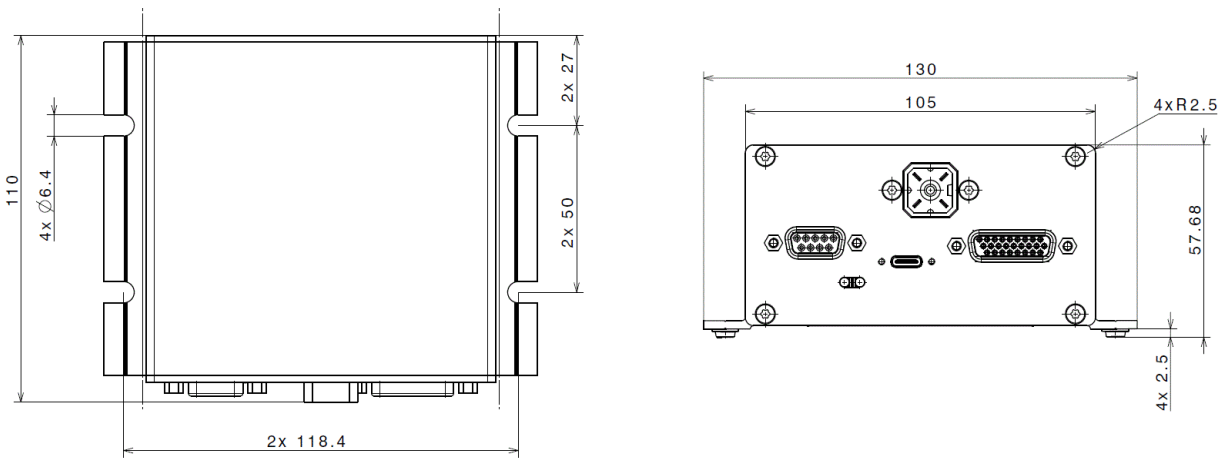
3) measuring time is the time in which the measured value is in the given range around the static end value; test weight is approx. 25% of the weighing range.

4) please refer to application instruction manual

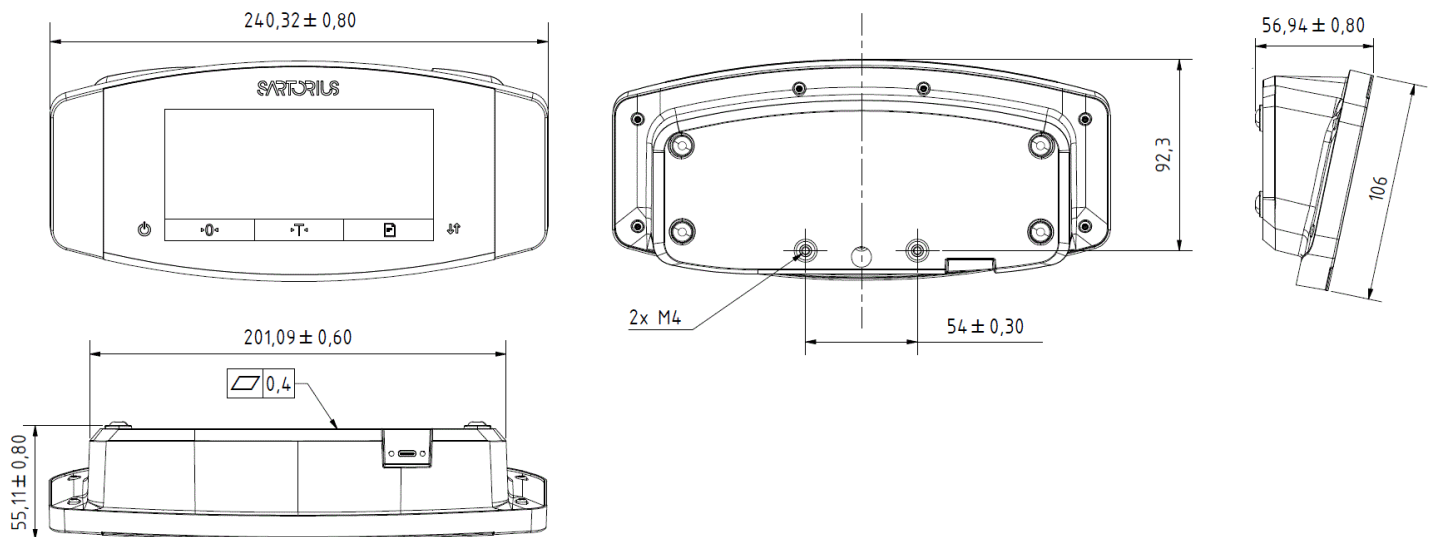
## Weigh cell



## Electronic module



## Optional YRD01 Display and Control Unit



Dimensions in mm

**Germany**

Sartorius Lab Instruments GmbH & Co. KG  
Otto-Brenner-Straße 20  
37079 Göttingen  
Phone +49 551 308 0

**France & Suisse Romande**

Phone +33 1 70 62 50 00

**USA**

Toll-free +1 800 635 2906

**Finland & Baltics**

Phone +358 9 755 951

**China**

Phone +86 21 6878 2300

**Italy**

Phone +39 0362 5557 11

**Japan**


Phone +81 3 6478 5200

**U.K.**

Phone +44 1372 737159

**South Korea**

Phone +82 31 622 5700

 For further contacts, visit  
[www.sartorius.com](http://www.sartorius.com)