

# The Basic series

OEM weigh cells

WZA54-L

WZA...	54-L
Capacity	50 g
Readability	0.1 mg

The WZA54-L has a capacity of 50 g with a readability of 0.1 mg combined with a small housing. A multiple weighing system can be arranged in linear fashion with a distance of 25 mm between the weighing pins. Head to Head configuration allow 12.5 mm track distance.

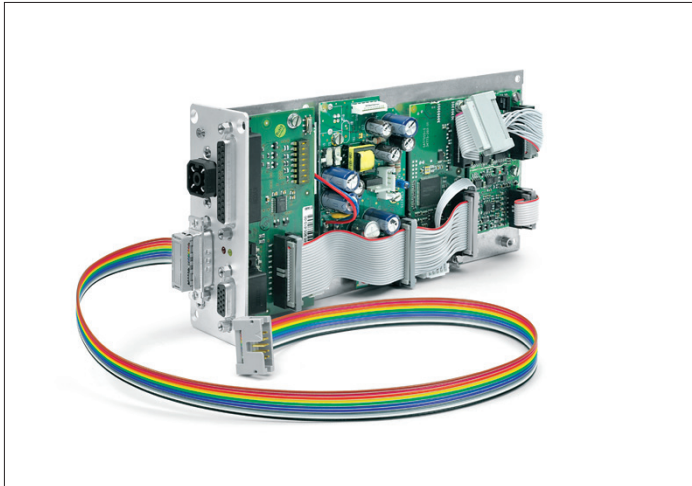
The weigh cell consists of two parts:

- A monolithic weighing system
- Electronic plate, all connection via the front panel

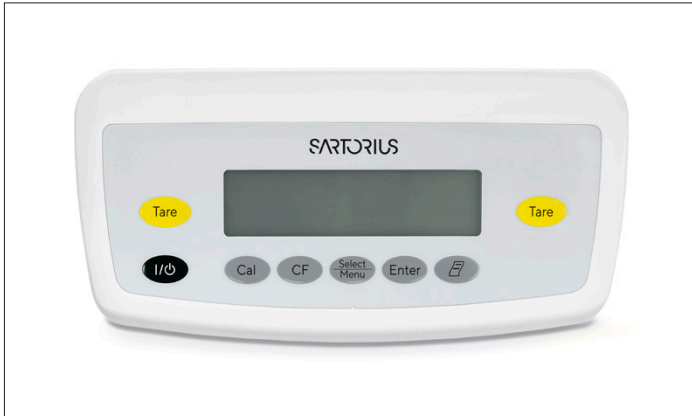


- Force compensation technology weighing system with a resolution of 0.1 mg
- Excellent weighing technology bundled with easy adaptation
- Load receptor with overload protection
- Fast warm-up by separation of weighing system and electronics
- Interconnection on electronic front panel
- LED's to control power and data transfer
- RS232C interface for configuration and data transfer
- Optional PC-software with menu setting, weigh data display and external calibration functions
- Minimum weigh pan distance only 25 mm.
- Customer housing of multiple weigh cells can fitted easily over the weigh cells.
- Sealing rings on top can be dismantled and refitted after placement of customer housing.

# Technical Data



Electronics module



YAC01ED (optional)

<b>Model</b>	<b>WZA54-L</b>	
Capacity	50 g	
Readability	0.1 mg	
Preload min. <sup>1)</sup>	5 g	
Repeatability (standard deviation) <sup>2)</sup>	±0.2 mg	
Linearity	±0.5 mg	
Measuring time <sup>2)3)</sup>	800 ms   ±0.1 mg 350 ms   ±1 mg	
Operating temperature range	+10 ... +30 °C	
Allowable temperature range	+5 ... +40 °C	
Weigh cell dimension	24 × 154 × 95 (65) mm (base × height)	
Electronic dimension	100 × 208 × 44 mm (base × height)	
Pin for weighing pan   load receptor	3 mm Ø   30 mm above housing, integrated overload and lift off protection	
Cable length weigh cell to electronics	Ribbon cable 0.5 m (maximum length 3 m, could be extend at side)	
Power supply	YEPS01-15V0H   100 – 240VAC, 50 – 60Hz  15V DC	
Power supply (alternative)	12...26, optimal 15V (+15% -10%); 0.5V <sub>pp</sub> (Peak to Peak)	
Power consumption	8 VA (average)	
Interface	RS232C , software   hardware hand-shake; No system power via RS232 connector	
Materials	Housing	Aluminum
	Weighing pin	Aluminum
IP rating related to DIN EN 60529	IPOO	

## Options | Accessories

Windows configuration software Sartorius CAS Suite for test and adjustment

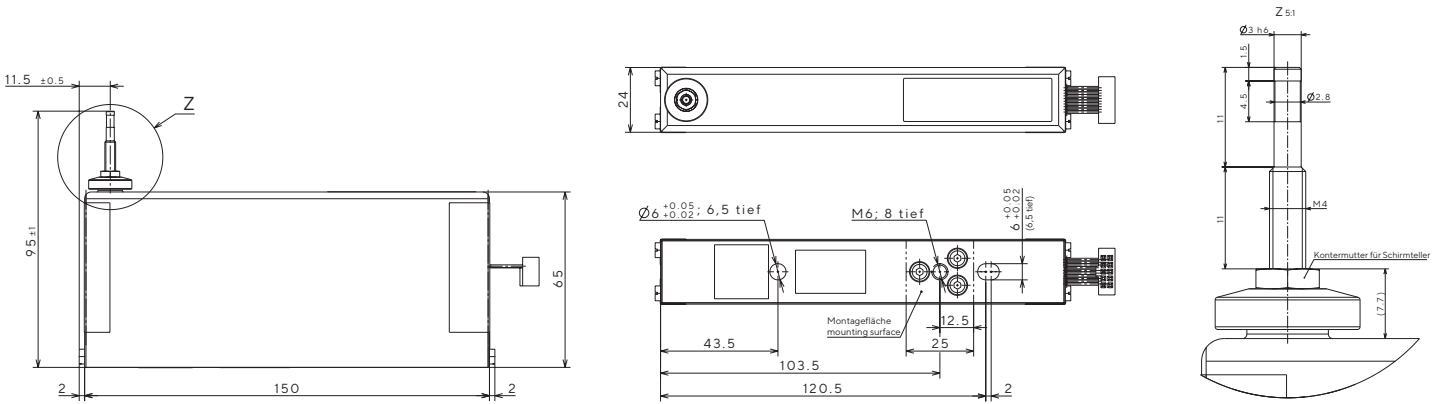
Liquid-crystal display YAC01ED

1) the preload can be configured by using the Sartorius CAS Suite H8S software; higher preload will reduce the weighing range

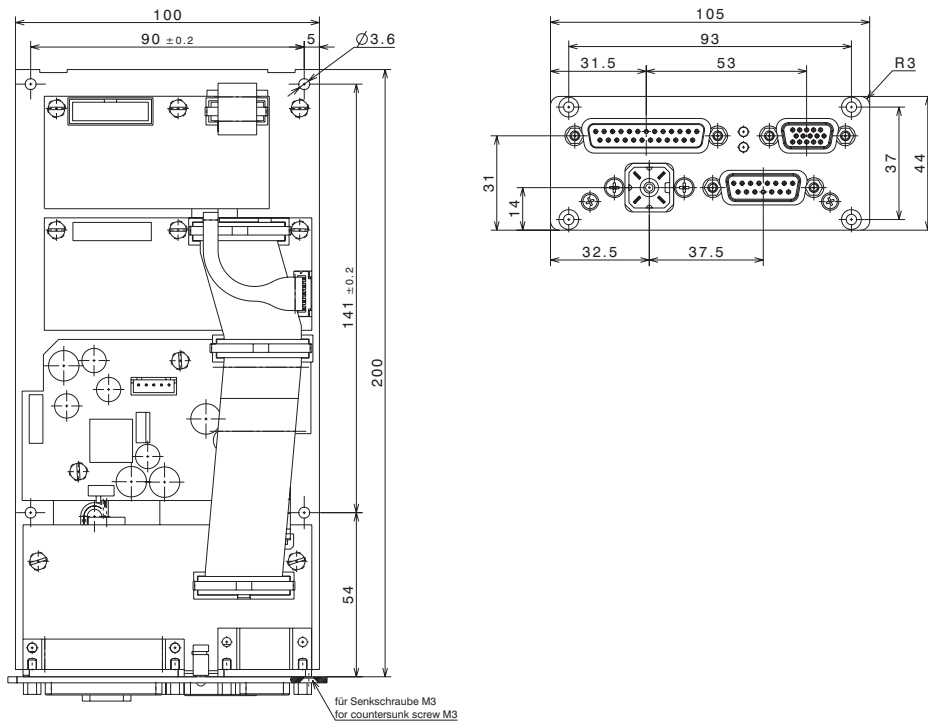
2) depending on measurement equipment set-up and conditions;

3) measuring time is the time in which the measured value is in the given range around the static end value; test weight is 1 g.

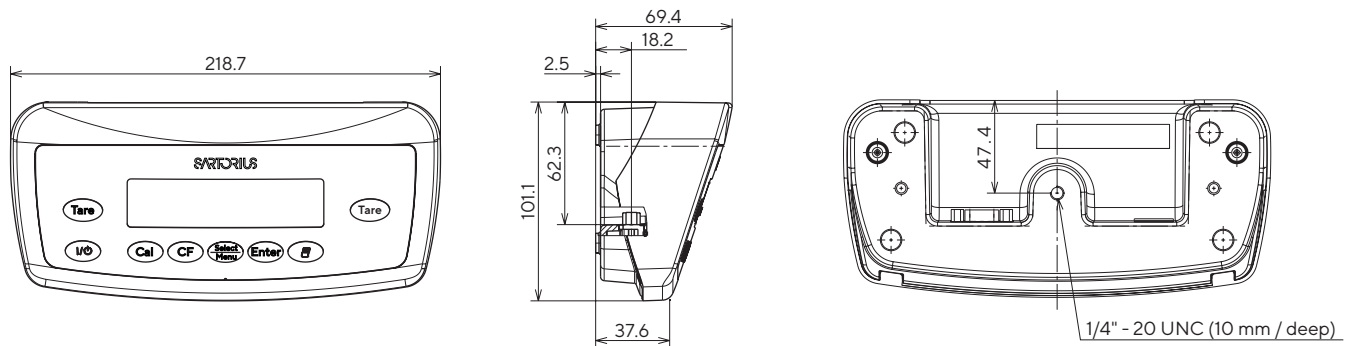
## Weigh cell



## Electronics module



## Optional YAC01ED Display and Control Unit



Dimensions in mm

**Germany**

Sartorius Lab Instruments GmbH & Co. KG  
Otto-Brenner-Strasse 20  
37079 Goettingen  
Phone +49 551 308 0

**France & Suisse Romande**

Phone +33 170 62 50 00

**Finland & Baltics**

Phone +358 9 755 951

**Italy**

Phone +39 0362 5557 11

**U.K.**

Phone +44 1372 737159

**USA**

Toll-free +1 800 635 2906

**China**


Phone +86 21 6878 2300

**Japan**

Phone +81 3 6478 5200

**South Korea**

Phone +82 31 622 5700

 For further contacts, visit  
[www.sartorius.com](http://www.sartorius.com)